

# FLIR B250

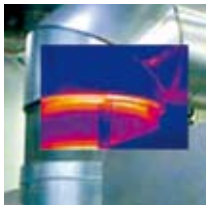
Infrared Camera with Picture-in-Picture and Touch-Screen Display

FLIR B250, the B-Series' base model, offers building thermographers a powerful solution ideal for detecting poor insulation, moisture, air leakages, etc. The camera has touch-screen LCD, thumbnail image gallery and interchangeable lenses.

- 70 mK thermal sensitivity
- IR resolution 240 x 180 pixels
- Humidity & Insulation alarm
- Digital camera, 3.1 Mp with LED lights
- Picture-in-Picture



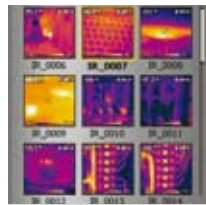
Multifunction 3.5" Touch Screen



Picture-in-Picture (PiP)



120° lens rotation

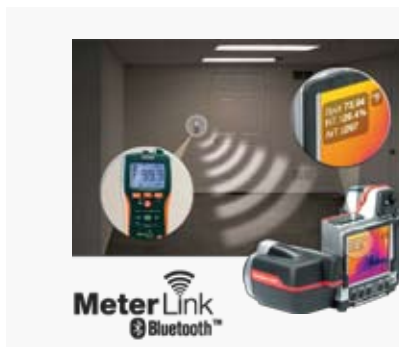


Thumbnail Image Gallery



## FLIR B250 Features

- **High Resolution IR Images** — 240 x 180 pixels infrared resolution, NETD 70 mK
- **Digital Camera** — 3.1 Megapixels with built-in LED lights provides sharp images regardless of lighting conditions
- **Wide Temperature Range** — Measures from -20 °C to +120 °C targeting electrical and industrial applications
- **Insulation alarm** — Shows the insulation performance of the building structure
- **Humidity alarm** — Alerts you to the areas where there is a risk of condensation
- **Zoom** — 2x continuous digital zoom for capturing small details
- **Picture-in-Picture (PiP)** — Displays IR image super-imposed over a digital image
- **Laser Pointer** — Pinpoints the hot spot on the IR image with the real physical target
- **Annotations** — Add sketch and image markers via touch screen
- **± 2% Accuracy** — Reliable temperature measurement
- **Thumbnail Image Gallery** — Allows quick search of stored images
- **MeterLink™** — Wirelessly transmit data from clamp or moisture meter to your infrared camera
- **Panorama** — Take sequential images and combine to large image with FLIR BuildIR SW
- **Copy to USB** — Upload images and measurement findings to USB stick
- **Li-Ion Rechargeable Battery** — Replaceable battery lasts > 4 hours of continuous use
- **Interchangeable Optics** — Standard 25° lens and optional 15°, 45° and 90° lenses
- **Standard SD Card** — Stores more than 1000 radiometric JPEG images
- **Includes** — SD Memory Card, Li-Ion rechargeable battery with 100-260V AC adaptor/charger, 2-bay battery charger, QuickReport software, USB Mini-B cable, video cable, sun shield, stylus pen & headset, camera lens cap, and transport case

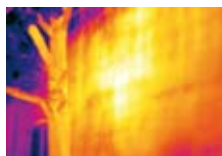


### What is MeterLink™?

MeterLink displays and documents readings from your Extech moisture- or clamp meter directly on your infrared image using Bluetooth wireless connection.

MeterLink, a FLIR industry-first technology, will: greatly improve your diagnostics, save time annotating readings, eliminate data errors, and add more customer value to your reports.

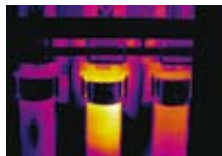
# Applications



Building: Water and mildew in wall



Building: Heat Loss



Electrical: Hot Fuses



Building: Heat Loss



## FLIR B250 Specifications

Imaging and optical data	
Field of view (FOV)	25° × 19° / 0.4 m
Thermal sensitivity/NETD	70 mK
Focus	Manual/Automatic
Zoom	1–2× continuous, digital zoom, including panning
Spectral range	7.5–13 µm
IR resolution	240 × 180 pixels
Image presentation	
Display	Built-in touch screen, 3.5" color LCD
Image modes	IR image, visual image, picture in picture, thumbnail gallery
Picture-in-Picture	Scalable IR area on visual image
Measurement	
Object temperature range	–20 °C to +120 °C
Accuracy	±2°C
Measurement analysis	
Spotmeter	5
Area	5 boxes with max./min./average
Isotherm	Detect high/low temperature/interval
Humidity alarm	1 humidity alarm, including dew point alarm
Insulation alarm	1 insulation alarm
Set-up	
Color palettes	BW, BW inv, Iron, Rain
Storage of images	
Image storage	Standard JPEG, including measurement data, on memory card
Image storage mode	IR/visual images; simultaneous storage of IR and visual images
MeterLink	Connect Extech Clamp Meter EX845/Moisture Meter M0297 via Bluetooth®
Image annotations	
Voice	60 seconds
Text	Text from predefined list or soft keyboard on touch screen
Digital camera	
Built-in digital camera	3.1 Mpixel (2048 × 1536 pixels), and LED lights
Physical data	
Camera weight, incl. battery	0.88 kg
Camera size (L × W × H)	106 × 201 × 125 mm



### Software

- FLIR QuickReport™**  
 Allows the user to organize, analyze and present infrared image data in a report. Delivered with your FLIR camera.
- FLIR BuildIR™**  
 A powerful yet easy-to-use software designed to visualise and quantify building related issues.

### Accessories

- Pouch
- Extra battery
- Battery charger
- Car charger
- Selection of lenses



### Training

FLIR cooperates with Infrared Training Centre, an independent, ISO certified, worldwide training facility. ITC offers infrared training, certifications accepted by many standardization organizations, and specialized instruction in various application areas. For more info visit [www.infraredtraining.com](http://www.infraredtraining.com)

Specifications and prices subject to change without notice.

Copyright © 2010 FLIR Systems. All right reserved including the right of reproduction in whole or in part in any form.

**FLIR Systems, Sweden**  
 World Wide Thermography  
 Center  
 Rinkebyvägen 19 - PO Box 3  
 SE-182 11 Danderyd  
 Tel: +46 (0)8 753 25 00  
 e-mail: [sales@flir.se](mailto:sales@flir.se)

**FLIR Systems, France**  
 Tel: +33 (0)1 41 33 97 97  
 e-mail: [info@flir.fr](mailto:info@flir.fr)

**FLIR Systems, Germany**  
 Tel: +49 (0)69 95 00 900  
 e-mail: [info@flir.de](mailto:info@flir.de)

**FLIR Systems, UK**  
 Tel: +44 (0)1732 220 011  
 e-mail: [sales@flir.uk.com](mailto:sales@flir.uk.com)

**FLIR Systems, Italy**  
 Tel: +39 02 99 45 10 01  
 e-mail: [info@flir.it](mailto:info@flir.it)

**FLIR Systems, Belgium**  
 Tel: +32 (0)3 287 87 10  
 e-mail: [info@flir.be](mailto:info@flir.be)



[www.flir.com/thg](http://www.flir.com/thg)